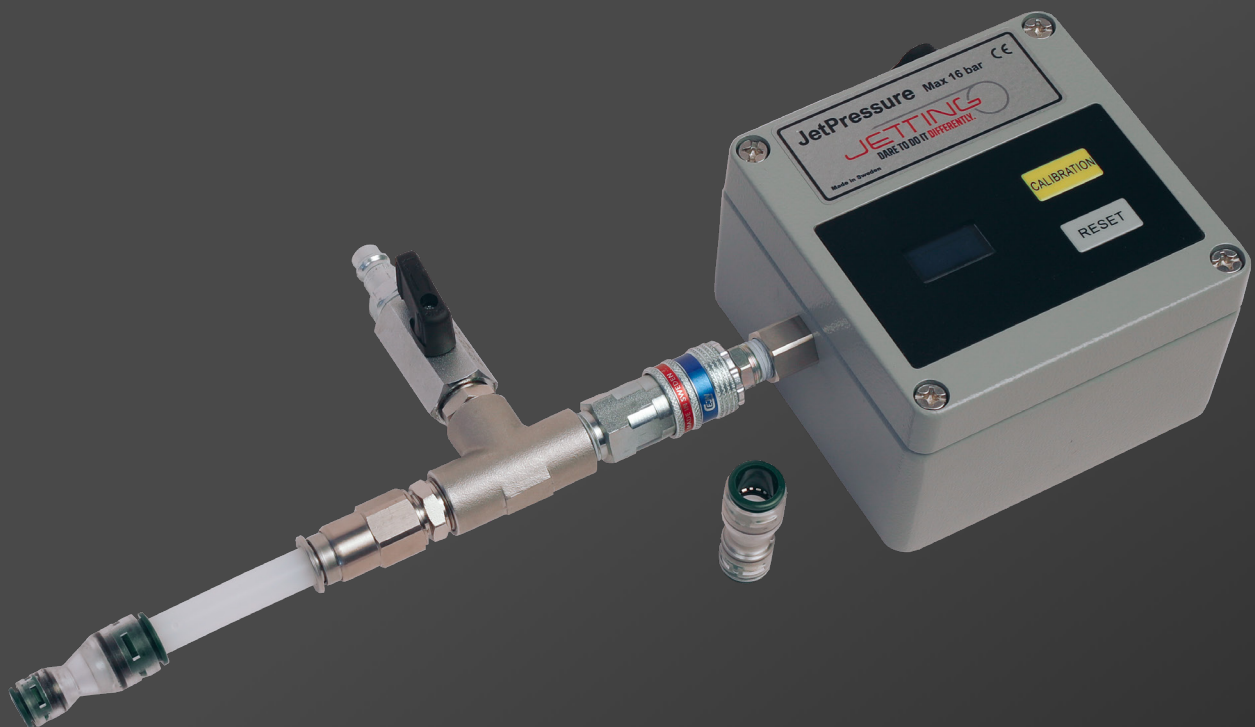


# JetPressure

Product modell/type: JetPressure

JETPRESSURE USER GUIDE



---

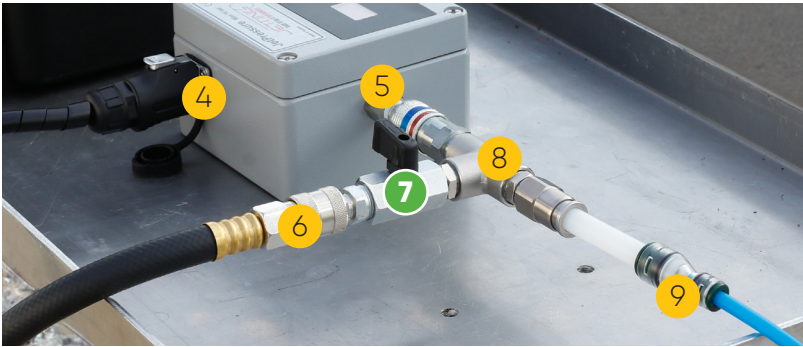
Copyright © 2024 by Jetting AB

All rights reserved. No part of this publication may be reproduced, distributed, or transmitted in any form or by any means, including photocopying, recording, or other electronic or mechanical methods, without the prior written permission of the publisher. For permission requests, write to the publisher, addressed "Attention: Permissions Coordinator," at the address below.

Jetting AB, Murgatan 1, 522 30 Tidaholm, Sweden  
jetting.se



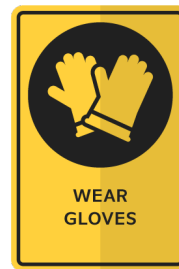
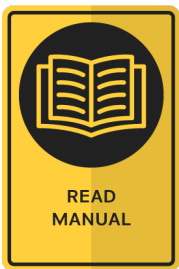
1. Display
2. Calibration button
3. Reset button
4. Jetlogger socket
5. Air socket
6. Air hose from compressor
- 7. Air Valve**
8. Air valve connector
9. Connector conduit



---

## Important Safety Notice

Read and understand all procedures and safety instructions before using the Jetting Jetpressure. Please note all safety information on this page and take note of specific safety requirements outlined in the procedures of this manual. Failure to follow these instructions may result in serious personal injury or death.



**Warning: Risk that noise level will exceed 70 dB.**

---

### Manufacturer

Jetting AB  
Murgatan 1  
522 30 Tidaholm  
Sweden  
jetting.se  
+46 502 65 90 10

---

## Table of contents

|                              | <b>Section</b> | <b>Page</b> |
|------------------------------|----------------|-------------|
| General information          | 1              | 6           |
| Technical information        | 2              | 7           |
| Safety regulations           | 3              | 8           |
| Unpacking the case           | 4              | 10          |
| Setup and operations         | 5              | 10          |
| Maintenance                  | 6              | 12          |
| Repair & Service             | 7              | 13          |
| Troubleshooting              | 8              | 13          |
| Documentation and disposal   | 9              | 13          |
| EC Declaration of Conformity | 10             | 14          |
| Warranty Information         | 11             | 15          |

## 1. General information

JetPressure provides a tailored solution for professional installers, offering comprehensive electronic duct/conduit documentation. Jetpressure integrates with the Jetting Jetlogger.

The Jetpressure comes standard with an air valve connector, 7-10-12 mm duct connectors, 7-10-12 mm pipe plugs, stored in a hard case.

These operating instructions contain a full description of the Jetpressure, which have been designed for the purpose of pressure testing the conduit.

The use of Jetpressure for operations other than those described in this manual are considered dangerous and are discouraged. Use of this unit for work other than what is intended, relieves the manufacturer from any responsibility, civil or penal. The manufacturer's responsibility ceases, and the warranty is voided when one of the following occurs:

- A. When Jetpressure is used for purposes other than what is detailed in this manual.
- B. Tampering and/or modifications carried out without written approval of the manufacturer.
- C. Not using original manufactured replacement parts.
- D. Poor maintenance.
- E. Not using supplied safety devices or equipment.
- F. Connection of this unit to machines and/or parts not produced or authorized in writing by the manufacturer.
- G. Jetpressure should not be used for anything other than measuring pressure in the duct.

Jetting AB is not responsible for injuries incurred as a result of improper use of the Jetpressure.

## 2. Technical information

### 2.1. Condition of use

1. Temperature from -15° C to +40° C (5°F to 104°F).
2. Humidity from 20 % to 90 %
3. Weather conditions relevant to working conditions
4. Natural and/or artificial lighting of the work site, >200 lux

### 2.2. Air compressor requirements

1. Pneumatic pressure 16 bar maximum
2. Required air flow 0.14 - 11 m<sup>3</sup>/min
3. Air hose fittings Cejn type
4. Air Conditions: Dry, clean, and oil-free

### 2.3. Operational capacities Jetpressure

1. Duct sizes 3-63 mm

### 2.4. Physical specifications

1. Height 80 mm
2. Length 140 mm
3. Width 165 mm
4. Weight Approx 1,1 kg
5. Transport case incl. unit, and accessories. H150 x W340 X D290, Weight approx 2 kg.

### 2.5. Duct coupling requirements

1. Must withstand maximum air pressure of 16 bar
2. Must withstand axial loading and vibration
3. Must be a compression type coupler
4. Must be air tight
5. Duct ends must be cut off squarely and deburred
6. Duct must be fully seated into the coupler

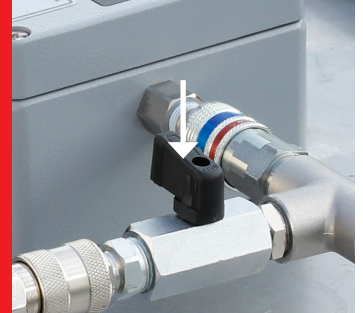
### 3. Safety Regulations

Read and understand all procedures and safety instructions before using the Jetpressure. Please note all safety information on this page and take note of specific safety requirements explained by procedures outlined in this manual. Failure to follow these instructions may result in serious personal injury, property damage, or death. The equipment must only be handled by trained and authorized personnel who have read and understood all documentation. **In the event of mishaps or breakdown, see section 3.1.**

The unit is delivered in a custom hard case. When transported, the unit shall be placed in the hard case. The hard case must be locked, and when transported by car, the locked case should be strapped in a safe way, preventing it from overturning if the car brakes hard.

#### 3.1. Unit Safety Shutdown

1. Close the air valve.
2. Turn off the compressor.
3. Open air valve.
4. Disassemble the unpressurized air hose from the unit..



#### 3.2. Workplace Safety

1. Wear personal protective equipment: ear protection, hard hat, safety glasses, steel reinforced safety shoes, and light leather work gloves (OSHA-approved or Personal Protective Equipment Directive 89/686/EEC-compliant).
2. The operator is responsible that no children or unauthorized persons are close to the unit while in operation.
3. Check the unit before starting for worn or damaged parts, loose nuts and bolts etc.
4. If unit is left unattended, ensure that unauthorized use is prevented.
5. The safe use of this equipment requires operators to stand on stable ground.
6. Be careful when handling duct/conduits
7. Be careful when handling pressurized lines and hoses.
8. Use the unit only for its intended purpose.
9. Beware of hot and cold surfaces, Jetpressure uses compressed air.
10. Beware of exposed electrical contacts. Do not touch, or allow metal objects to come into contact.
11. The unit may cause additional fire hazard if involved in an existing fire due to compressed air.
12. No personnel are to be in manholes or ducts when the unit is being operated.
13. The unit must be operated on firm ground.



### **3.3. Working with air**

The Jetpressure, using pressurized air.

Please observe the following precautions when using the unit:

1. Compressed air generates flying debris. Serious personal injuries can occur.  
Always wear personal protective equipment.
2. Never disassemble air connections when unit is pressurized.
3. Only AUTHORIZED, fully trained personnel should operate the air compressor.

### **3.4. Electrical devices**

The digital display is a electrical device. Electrical shock hazards exist that could result in severe personal injury or death. Observe the following precautions to avoid electrical hazards:

1. Do not operate in or near water. This includes setting the unit on a wet surface or exposing to rain.
2. Do not operate when there is lightning or extreme weather. An earth stake driven into the ground as added protection is recommended if there is any chance of extreme weather developing.
3. Do not remove the digital display cover. There are no user-serviceable parts inside. Leave servicing to qualified service personnel.

### **3.5. Working at night requirements**

1. Operator must provide portable lighting that achieves a light intensity of at least 200 Lux (Lumens/m<sup>2</sup>).

## 4. Unpacking the Case

### 4.1. Jetpressure components

Each Jetpressure Kit contains the following items:

- Jetpressure unit
- Air valve connector
- 3 pcs duct connectors
- 3 pcs duct plugs



---

## 5. Setup and operations

This manual contains setup and operating instructions for the Jetpressure.



**Do not connect air supply until 5.5!**  
**Always wear protective equipment: hard hat, safety glasses, safety shoes and work glove.**



### 5.1. Determine duct size

1. Determine the size of duct to be pressure tested.

### 5.2. Air connections

1. Connect the air valve to the Jetpressure unit.
2. Connect the air hose to the air valve.
3. Connect the duct/conduit to the conduit/duct connector.

### 5.3. Connect Jetlogger to Jetpressure

1. Connect the Jetlogger cable into the Jetlogger socket

### 5.4. Enter data in Jetlogger

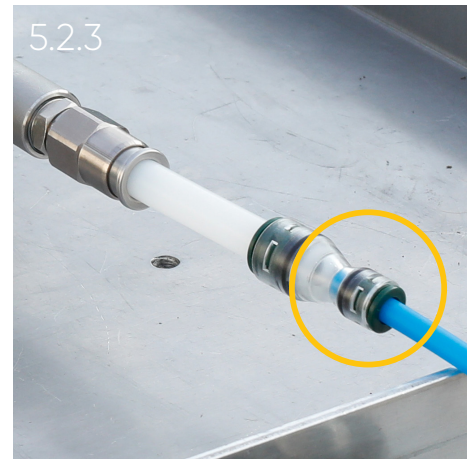
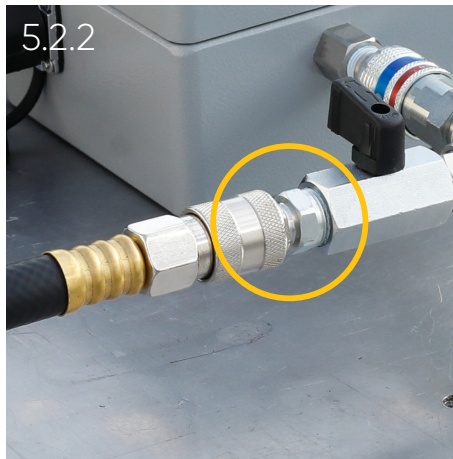
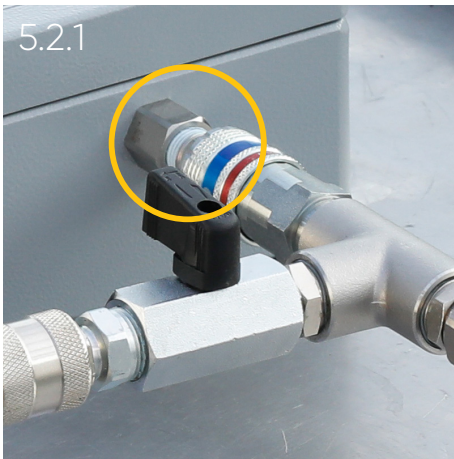
1. Enter position data and pipe/duct parameters in 'Fiber Blowing Protocol'.
2. Choose 'Pressure Tester' in menu under 'Fiber Blowing Protocol'.

### 5.5. Supply air and fill pipe/duct

1. Start compressor and supply air.
2. Fill pipe/duct to maximum. Close valve.

### 5.6. Recording data

1. Press 'RESET' on Jetpressure, then click 'Start Session' in the 'Fiber Blowing Protocol'.
2. Jetlogger is now recording data every 60 seconds. Recommended time for data collection is 10 minutes.
3. After 10 minutes, press 'End Session' and save your data.



5.4.1  
5.4.2

| JetLogger   |                   | Fiber Blowing Protocol                                   |                               |   |              |
|---|-------------------|--|-------------------------------|---|--------------|
| Project   | Demo              |  |                               |   |              |
| Address   | Address           |  |                               |   |              |
| Company   | Jetting           |  |                               |   |              |
| Operator  | Johan             |  |                               |   |              |
| Comments  | Comments          |  |                               |   |              |
| Time - Duration[hh:mm:ss]   | 27.02.2023, 14:10 | Location (GPS)   | 00,0000', 0,00000', 00,0000 m |   |              |
| Pipe parameters   |                   | Cable parameters   |                               | Machine / Compressor  |              |
| Manufacturer  | Demo              | Manufacturer   | Manufacturer                  | Fiber blowing machine   |              |
| Pipe type   | Singel            | Cable type   | Cable type                    | Pressure Tester   |              |
| Color / Description   | Kabel-Ø:          | Cable-Ø  | Lubricant                     | Lubricant   |              |
| Blue  | Fiber Count       | no.  | Compressor                    | Compressor  |              |
| Type of pipe laying   | Cable drum-No.    |  | Oil separator                 | <input type="checkbox"/> Aftercooler <input type="checkbox"/>                       |              |
| Type of pipe laying   | Cable tip         | Yes <input type="checkbox"/> No <input type="checkbox"/> | Crash test carried out        | Yes <input type="checkbox"/> No <input checked="" type="checkbox"/>                 |              |
| Inner pipe diameter   | 3,5               | Cable temperature  | Temperature                   | Max. Pushing force:   |              |
| Outer pipe diameter   | 7                 | Metrology / Environment                                  |                               | Safety shutdown Yes <input type="checkbox"/> No <input checked="" type="checkbox"/> |              |
| Pipe temperature  | Temperature       | Start  | End                           | P RHT 90245C  | 21.9 °C 28 % |
| Inner pipe wall surface   |                   | Route distance   |                               | SEARCHING FOR BLUESENSOR  |              |
| Smooth <input type="checkbox"/> Grooves <input checked="" type="checkbox"/> |                   | Operating temperature                                    | 21.9°                         |   |              |
|   |                   | Humidity   | 28.0                          | START SESSION   |              |

### 5.7. Release air

1. Release air from duct.

**⚠ Important, open valve and release air from pipe/duct before disconnecting Jetpressure. Risk of personal injury when disconnecting the pressure tester when the duct is pressurized.**

### 5.8. Calibration

1. Depending on the altitude/pressure difference, Jetpressure needs to be calibrated.
2. To calibrate, press and hold the two buttons on Jetpressure and then click the Jetlogger power button located just above the battery.

### 5.9. Change Bar to PSI

1. Press the reset button on Jetpressure and then click the Jetlogger power button located just above the battery.
2. Follow the same procedure to switch back from PSI to Bar.

### 6.0. Display Functions

Time after startup →

Min. pressure value →

Initial pressure value at startup →

Bar or PSI →

Battery level Jetlogger →

Maximum pressure value →

Pressure difference min/max →

Current pressure value (Bar or PSI) →

All values will be cleared when you press 'Reset'

## 6. Maintenance



**Disconnect the air supply and vent any air pressure before servicing any component on the Jetpressure. Avoid handling leaking connections, hoses or valve seals. DANGER! Risk of compressed air penetrating the skin causing air embolism. In case of suspicion, immediately contact emergency medical care.**

| Procedure  | Daily | Weekly | Monthly | 60 days | 90 days |
|--|-------|--------|---------|---------|---------|
| Clean all units and components thoroughly with a dry cloth.  | ✓     |        |         |         |         |
| If used in moisture weather. Remove the unit from the hard case and leave it to dry completely                     | ✓     |        |         |         |         |
| Inspect hoses, cables, connections, fastening elements, couplings and screws for any signs of damage or looseness. | ✓     |        |         |         |         |

## 7. Repair & Service

Repair & Service should be performed by Authorized Jetting Service Center or Jetting AB. See Authorized Jetting Service Center at [www.jetting.se](http://www.jetting.se).

---

## 8. Troubleshooting

Difficult to maintain a constant pressure.

1. Too much leakage in the duct you are pressure testing?
2. Is the compressor delivering air into the hose?
3. Check that all connectors and plugs are correctly mounted.

I'm not getting any values.

1. Do you have a charged battery in the Jetlogger?
2. Is the cable properly connected between the Jetlogger and the Jetpressure?

---

## 9. Documentation and Recycling

### Order Documentation

For documentation, user manuals, and technical information, please visit [www.jetting.se](http://www.jetting.se). Alternatively, contact your local distributor for assistance.

### Disposal

Adhere to the regulations of your country regarding the recycling and disposal of the product.

## 10. EC Declaration of Conformity

### EC DECLARATION OF CONFORMITY OF THE MACHINERY

Original

Directive 2006/42/EC, Annex II 1A

#### Manufacturer (and where appropriate his authorised representative):

|          |   |
|----------|---|
| Company: | Jetting AB                              |
| Address: | Murgatan 1<br>522 35 TIDAHOLM<br>SWEDEN |

#### Hereby declares that:

|                    |             |
|--------------------|-------------|
| Type of machinery: | Jetpressure |
| No. of machinery:  | 661284      |

#### Complies with the requirements of Machinery Directive 2006/42/EC.

#### Complies also with applicable requirements of the following EC directives:

2014/30/EU, EMC

#### The following harmonized standards have been applied:

EN ISO 12100:2010 Safety of machinery - General principles for design - Risk assessment and risk reduction  
EN 60204-1:2018 Safety of machinery - Electrical equipment of machines - Part 1: General requirements

#### The following other standards and specifications have been applied:

#### Authorized to compile the technical file:

|          |                             |
|----------|-----------------------------|
| Name:    | Håkan Johansson             |
| Address: | Murgatan 1, 522 35 TIDAHOLM |

#### Signature:

|                 |                     |
|-----------------|---------------------|
| Place and date: | Tidaholm 2024-02-20 |
|-----------------|---------------------|

Signature:

|           |               |
|-----------|---------------|
| Name:     | Ted Josefsson |
| Position: | CEO           |

## **11. Warranty Information**

### **Warranty Period**

This product is covered by a warranty for 12 months from the date of purchase. A valid receipt must be presented to claim the warranty.

### **Warranty Conditions**

Damage and defects, which have occurred by improper use, unauthorized modifications or unauthorized repairs, are not covered by the warranty.



## JETPRESSURE USER'S GUIDE AND SAFETY MANUAL